

Based on your individual demand

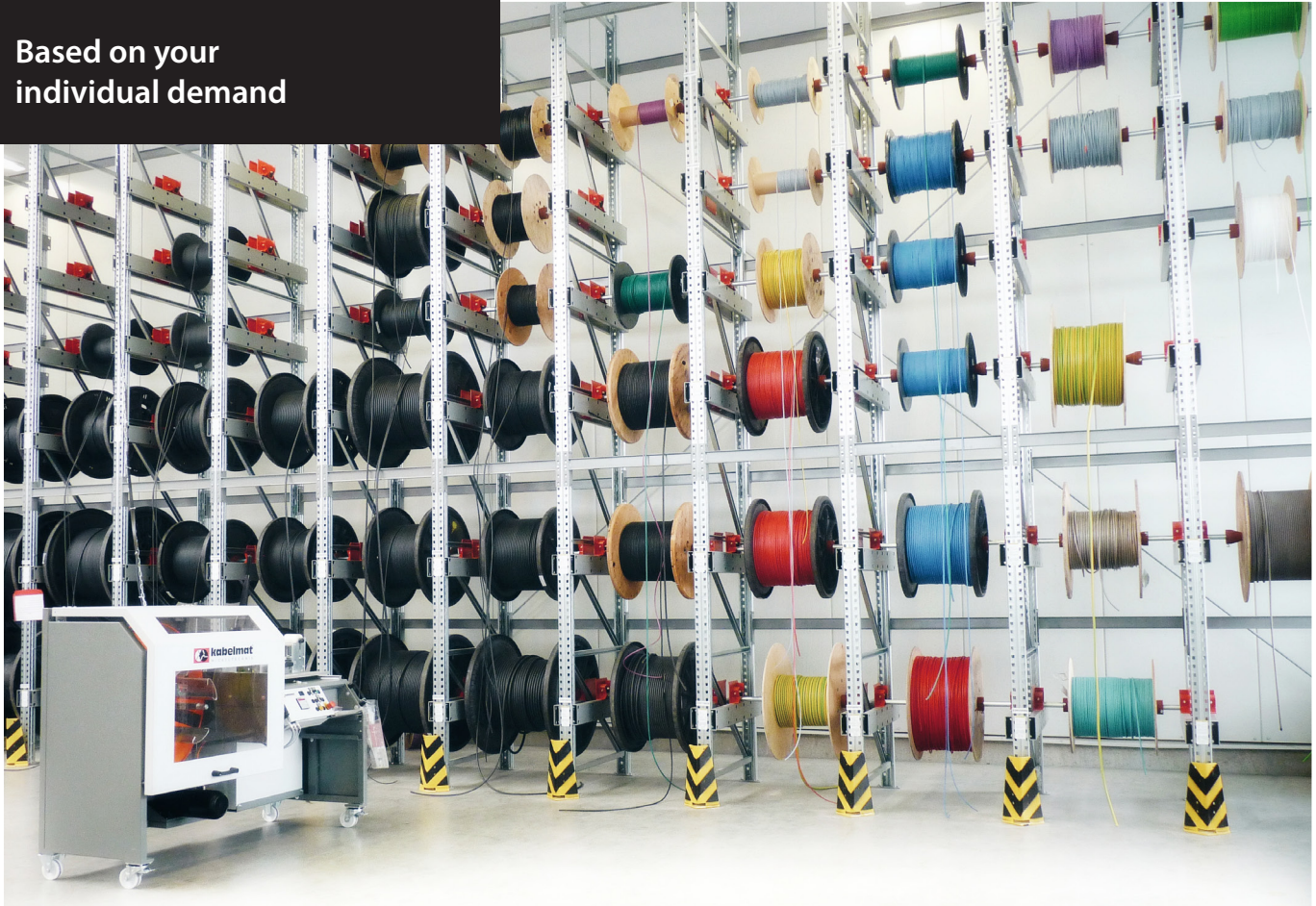


Fig.1 LAGROL drum rack with MOTROL 800 EASY coil and spool winding machine

## LAGROL

- **Drum rack and unwinding system**

### Functionality:

The **LAGROL** drum rack segments consist of two frames each of appropriate height, the necessary cross connectors for the respective segment load as well as of the axle holding fixtures and the axles for the drums. For each further segment only an additional frame is required and the corresponding number of cross connectors, axle holding fixtures and axles. The system is suitable for manual and motorized winding.

This drum rack and unwinding system is ideal for the use in a production line along with the motorized take-ups such as **UMROL**, **MOTROL** or **AUTOCUT**. The solid construction with special and patented axle and / or drum holders and the fact that winders and storage system are well-suited to each other make this system ideal for the above mentioned range of application.

- Variable equipping possibilities
- Customer-specific system
- High stability
- High surface protection (powder coated)
- Perfect addition to winders
- Suitable for motorized winding

## Drum rack and unwinding system

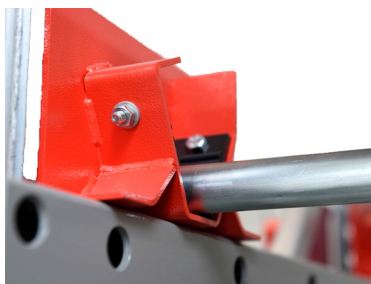


Fig.2 LAGROL axle holder



Fig.3 LAGROL drum rack with TROMPLAT transport and loading tool for drums

Also suitable for  
motorized winding

## Store and wind winding materials comfortable - The perfect combination

- **MOTROL 800 EASY coil and spool winding machine**

The MOTROL 800 Easy is the entry-level model in the machine sector. This motorized ring and drum winding machine is designed for winding coilable material such as cables, pipes, hoses, steel ropes, plastic profiles etc. either as rings or on spools and drums. With the appropriate components such as length measuring device and material cutter, the material can be measured and cut to length. The winding speed is adjustable at the operating desk by means of a rotary potentiometer. The frequency-controlled winding drive allows a smooth winding of the material.

Our unwinders of the type MOTROL or UMROL allow unwinding straight from the stored drums. This is possible due to the solid design as well as to the patented axle holding fixtures with exchangeable brake linings.

» Find more information at [MOTROL 800 EASY](#)



Fig.4 MOTROL 800 EASY Coil and spool winding machine

## Drum rack and unwinding system

### Frames and crossbars

Part No.	Frames
85300073	Height 2200 mm
85300074	Height 2500 mm
85300075	Height 2700 mm
85300076	Height 3000 mm
85300077	Height 3300 mm
85300078	Height 3600 mm
85300079	Height 3800 mm
85300080	Height 4100 mm
85300081	Height 4400 mm
85300082	Height 4700 mm
85300083	Height 5200 mm
85300084	Height 5500 mm
85300085	Height 5800 mm
85300086	Height 6000 mm

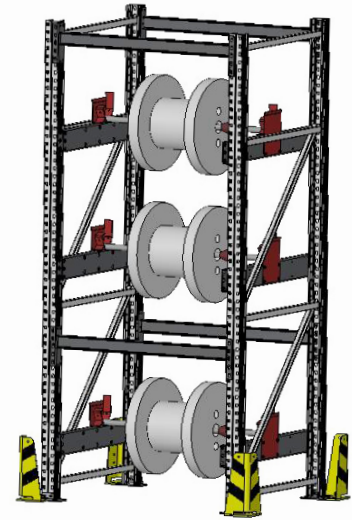


Fig.5 Example drum rack with 1 field

Part No.	Crossbars	Necessary crossbars	Loading capacity
85300090	870 mm up to Ø 900 mm	Height 2200 mm 1 front, 1 back	max. 3000 kg
85300091	1170 mm up to Ø 1400 mm	Height 2500 - 4100 mm 2 front, 2 back	max. 3000 kg
85300092	1370 mm up to Ø 1600 mm	Height 4400 - 5200 mm 3 front, 3 back	max. 4000 kg
85300093	1570 mm up to Ø 2000 mm	Height 5500 - 6000 mm 4 front, 4 back	max. 5200 kg

### Frame accessory

Part No.	Accessory
85300097	Floor anchors (4 pcs. per frame)
85300099	Collision guard, corner (2 pcs. per frame)
85300098	Collision guard, front for drum Ø 900mm
85300115	Collision guard, front for drum Ø 800mm



Fig.6 Collision guard, corner

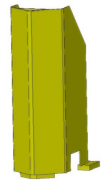


Fig.7 Collision guard, front

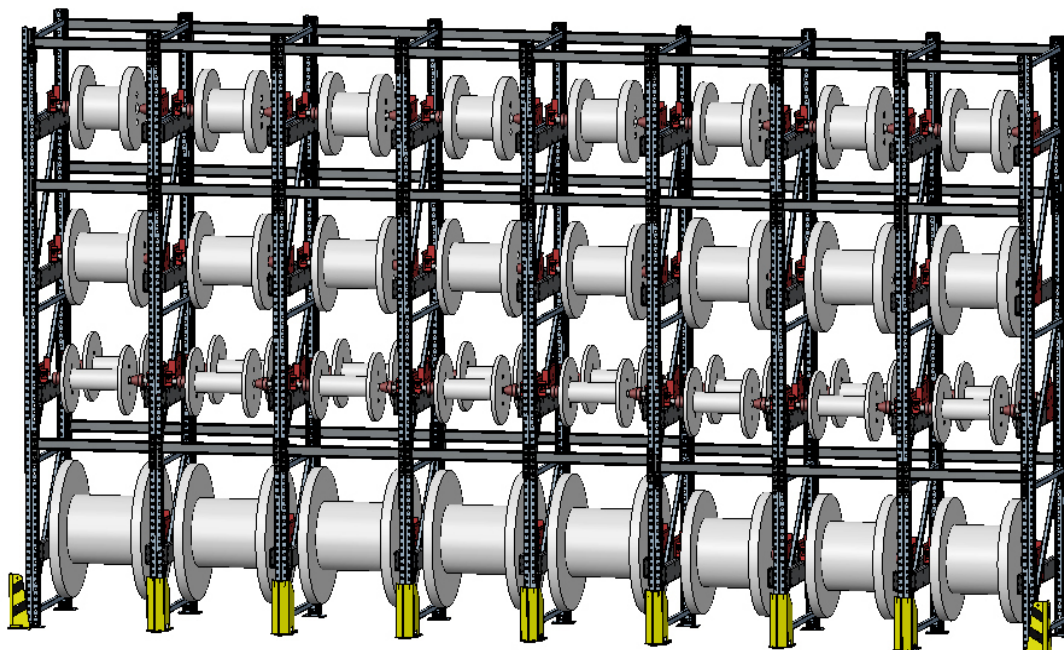


Fig.8 Example drum rack with 8 fields

## Drum rack and unwinding system

### Axle holders / shells

**Part No.** **Pair of axle holders with retaining tubes excl. brake pads**  
 85300100 LAGROL 1050 mm depth, 2000 kg incl. retaining tubes - 3 holding pos. for single drum allocation

85300105 LAGROL 1050 mm depth, 2000 kg incl. retaining tubes - 5 holding pos. for double drum allocation max. drum Ø600mm

**Part No.** **Pair of axle holders with retaining tubes incl. brake pads**  
 85300101 LAGROL 1050 mm depth, 2000 kg incl. retaining tubes - 3 holding pos. for single drum allocation

**Part No.** **Pair of axle shells excl. brake pads**  
 85300104 LAGROL pair of axle shells without retaining tubes excl. brake pads

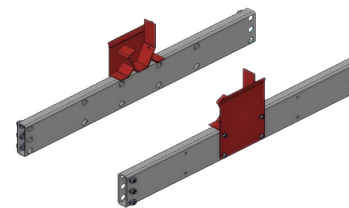


Fig.9 Pair of axle holders with retaining tubes excl. brake pads (3 pos.) for single drum allocation

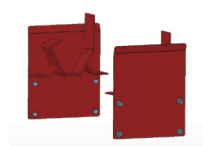


Fig.10 Pair of axle shells excl. brake pads

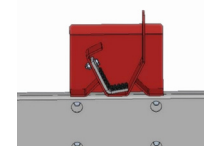


Fig.11 Axle shell incl. brake pad for Ø60 mm axle drum

### Brake pads for axle holders / shells

**Part No.** **Brake pads for axle holders / shells**  
 85300103 Brake pads (2 left,2 right) when using drum axle Ø 34mm

85300113 Brake pads (1 left,1 right) when using drum axle Ø 60mm

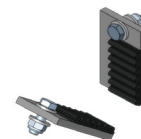


Fig.12 Brake pads for axle drum Ø34 mm



Fig.13 Brake pad for axle drum Ø60 mm

### Drum axle incl. 2 centering cones

**Part No.** **Drum axle incl. 2 centering cones**  
 85008010 Ø 34 - 840 mm, Loading capacity 1000 kg

85008020 Ø 34 - 1140 mm, Loading capacity 700 kg

85008030 Ø 60 - 1140 mm, Loading capacity 1700 kg

85008040 Ø 60 - 1340 mm, Loading capacity 2000 kg

Special axles upon request

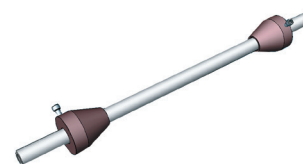


Fig.14 Drum axle incl. 2 cones

### Clamping tool for cones

**Part No.** **Clamping tool for cones**  
 85300108 Clamping tool for cones with axle Ø 34 mm

85300109 Clamping tool for cones with axle Ø 60 mm

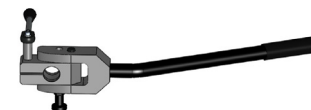


Fig.15 Clamping tools for cones

### Drum axle incl. driving pin

**Part No.** **Drum axle incl. driving pin**

**Note:** For drums whose bores are provided with a steel insert, we recommend to use our special drum axles with driving pin

85300114 Ø 60 - 1140 mm, Loading capacity 2000 kg

85300110 Ø 60 - 1340 mm, Loading capacity 2000 kg



Fig.16 Drum axle incl. driving pin

Indoor use only. Fig.may differ from original.



Fig.17 Cable trailing system for rack mounting

- **Cable trailing system with flat cable for rack mounting / ceiling mounting 230V/400V / 16A**

### Functionality:

The components of the cable trailing system are made of galvanized steel. The ball-bearing rollers assure smooth and trouble-free running in a special profile rail. The cables are gently clamped by neoprene rubber plates. A specially shaped pressure-reducing piece prevents the cable from getting kinked at the clamping point. The system is mounted on the associated carrying arms on Kabelmat drum rack and unwinding system LAGROL.

### Basic equipment:

- U-profile rail with holder for rack mounting
- Cable trolley with clamping device for flat cables
- Buffer for cable carrier left / right
- Discharging terminal
- Stopper
- Terminal box for wall mounting to connect main supply
- Flat cable with plug to supply the machine with power

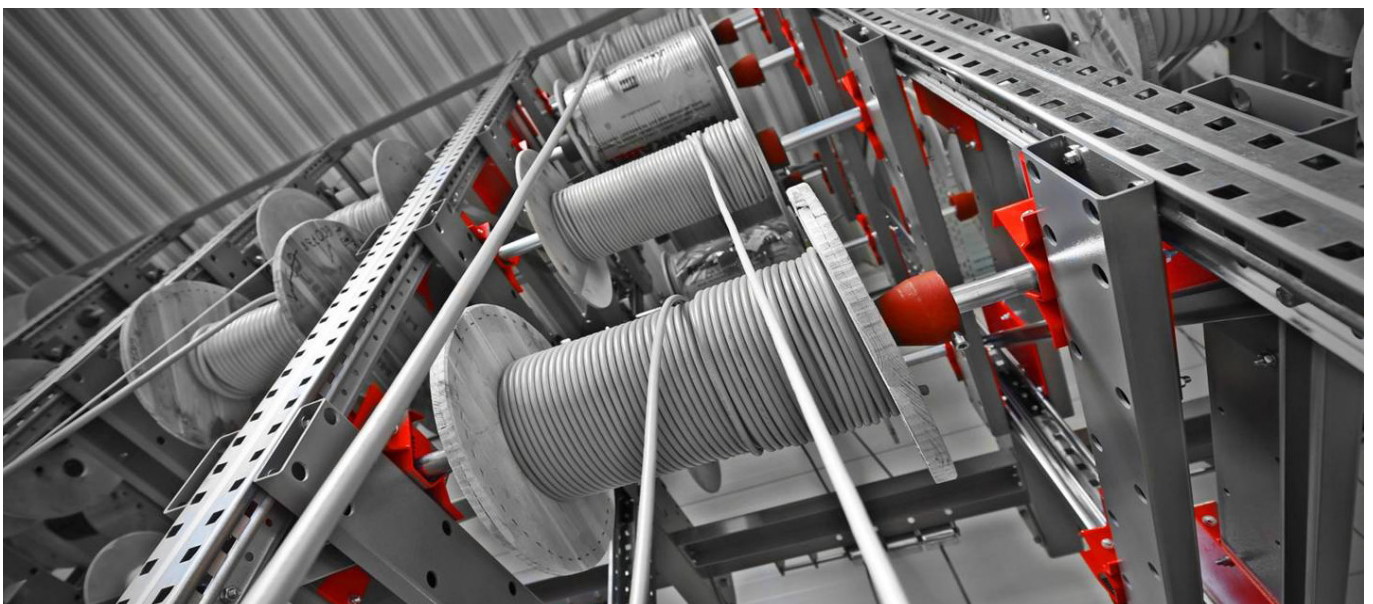


Fig. 18 LAGROL drum rack