

RINGFIX / SPULFIX

Coil and spool unwinder, manual

Also available for tubes and plastic pipes



Fig. 1 RINGFIX TABLE with RINGFIX 480



Fig. 2 RINGFIX MOBILE with RINGFIX 480



Fig. 3 RINGFIX STATIONARY with RINGFIX 480

RINGFIX / SPULFIX

Manual coil and spool unwinder

Functionality:

This manual coil and spool unwinder enables to pull off material like cables, wires, tubes, plastic pipes etc. from coils or spools. Adjustable break mechanism avoid an uncontrolled material flow. Coils and spools rest with their dead weight centrally tensioned on the winding plates. A separate bouncing protection is the optimal addition to unwind tubes and plastic pipes easily.

- Twisting-free unwinding of the winding material
- Adjustable break mechanism at the base frame avoid an uncontrolled material flow
- Easy assembly and removal of the coils and spools
- Inside diameter continuously adjustable via core bolts and fixable in every position
- Optional: Bouncing protection for unwinding tubes or plastic pipes

Modular system

Possible combination:

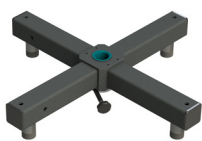


Fig. 4 RINGFIX TABLE

+



Fig. 5 RINGFIX 480

=



Fig. 6 RINGFIX TABLE with RINGFIX 480

Base frame incl. break mechanism

Technical data	RINGFIX TABLE	RINGFIX MOBILE	RINGFIX STATIONARY
Part No.	85101513	85101514	85101515
Unwinding height	160 mm	825 - 975 mm	695 - 840 mm
L x W x H	approx. 520 x 520 x 102 mm	approx. 1045 x 1045 x 920 mm	approx. 880 x 880 x 790 mm
Plate-Ø	480 - 800 mm	480 - 800 mm	480 - 800 mm
Colour	RAL 7005 mouse grey	RAL 7005 mouse grey	RAL 7005 mouse grey
Weight	approx. 8,5 kg	approx. 32 kg	approx. 27 kg
With rollers (set)	-	✓	-

RINGFIX / SPULFIX

Coil and spool unwinder, manual

For coils



Fig. 5 RINGFIX TABLE with RINGFIX 480

For tube and plastic pipe coils



Fig. 6 RINGFIX TABLE with RINGFIX 480 and bouncing protection for tubes / plastic pipe

Coil unwinding plates

Technical data	RINGFIX 480	RINGFIX 650	RINGFIX 800
Part No.	85101509	85101510	85101511
Coil-Ø	max. 470 mm	max. 640 mm	max. 790 mm
Plate-Ø	480 mm	650 mm	800 mm
Height core bolts	250 mm	250 mm	250 mm
Core adjusting range	140 - 320 mm	180 - 500 mm	220 - 660 mm
Load capacity	max. 20 kg	max. 20 kg	max. 20 kg
Colour	zinc-plated	zinc-plated	zinc-plated
Weight	approx. 15 kg	approx. 26 kg	approx. 38 kg

Bouncing protection

- Border bolts and cover plate to avoid the bounce of the coil (e.g. for tubes and plastic pipes)

Technical data	for RINGFIX 480	for RINGFIX 650	for RINGFIX 800
Part No.	85101504	85101507	85101512
Cover plate-Ø	max. 480 mm	max. 650 mm	max. 800 mm
Incl. 5 border bolts	✓	✓	✓
Height border bolts	305 mm	305 mm	305 mm
Coil height	max. 230 mm	max. 230 mm	max. 230 mm
Weight	approx. 7,3 kg	approx. 10 kg	approx. 12,5 kg
Weight cover plate	approx. 3,3 kg	approx. 4,4 kg	approx. 5,4 kg
Colour cover plate	RAL 7005 mouse grey	RAL 7005 mouse grey	RAL 7005 mouse grey
Colour border bolts	zinc-plated	zinc-plated	zinc-plated

Spool unwinding plate

Technical data	SPULFIX 480
Part No.	85101516
Spool-Ø	max. 470 mm
Spool width	max. 150 mm
Plate-Ø	480 mm
Axle-Ø	16 x 200 mm
Centering cone for bore-Ø	25 - 80 mm
Load capacity	max. 20 kg
Colour	zinc-plated
Weight	approx. 5,5 kg

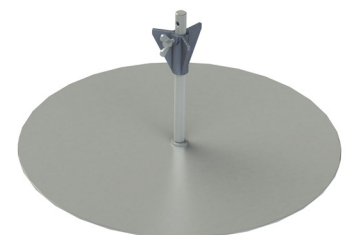


Fig. 7 SPULFIX 480

RINGFIX / SPULFIX

Coil and spool unwinder, manual

Complete devices

- for unwinding small coils and spools

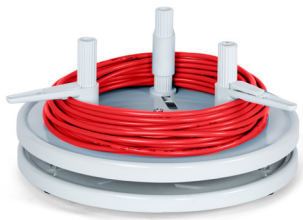


Fig. 8 RINGFIX 300



Fig. 9 SPULFIX 300

Coil unwinder

Technical data	RINGFIX 300	RINGFIX 450
Part No.	85100004	85100005
Coil-Ø	max. 290 mm	max. 440 mm
Height core bolts	110 mm	110 mm
Core adjusting range	90 - 190 mm	150 - 250 mm
Plate-Ø	300 mm	450 mm
Load capacity	max. 10 kg	max. 12 kg
Colour	RAL 7035 light grey	RAL 7035 light grey
Weight	approx. 2,5 kg	approx. 4,5 kg

Spool unwinder

Technical data	SPULFIX 300	SPULFIX 450
Part No.	85100007	85100475
Spool-Ø	max. 290 mm	max. 440 mm
Spool height	max. 150 mm	max. 150 mm
Centering cone for bore-Ø	25 - 80 mm	25 - 80 mm
Axle-Ø	16 x 200 mm	16 x 200 mm
Load capacity	max. 10 kg	max. 12 kg
Colour	RAL 7035 light grey	RAL 7035 light grey
Weight	approx. 2,5 kg	approx. 4,5 kg