

RINGROL 800

Semi-automatic coil winder

Coil winding made easy



Fig 1 RINGROL 800

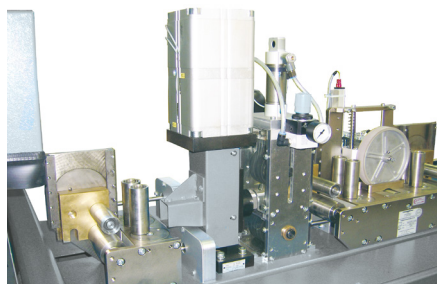


Fig 2 Example traversing unit

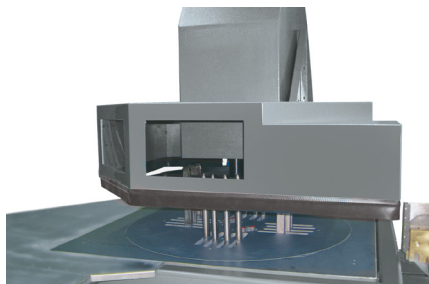


Fig 3 Winding unit

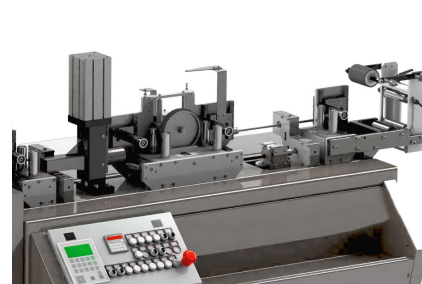


Fig. 4 Central adjustment of the guide rollers optional motor driven version available

RINGROL 800

- Semi-automatic coil winding machine for coil-Ø max. 800 mm

Functionality:

This semi-automatic coil winder allows to wind materials such as cables, tubes etc. onto coils. Simultaneously, the material can be measured and cut to length. The mounted extension unit with automatic traversing drive is provided for the installation of a length measuring device (additional equipment), a material cutter or a feeder unit. The machine works semi-automatically, the cable catch is manually fed into the winding core. The machine winds the coil automatically and stops upon reaching the pre-selected length. Afterwards, the wound coil is pushed to the desk of a binding device (accessories) by the operator in order to be wound finally. Kabelmat drum storage racks are suitable for the direct winding.

Technical data	RINGROL 800
Part No.	3853.000
Winding plate-Ø	800 mm
Core-Ø	300 - 550 mm infinitely variable
Winding height	50 - 200 mm infinitely variable
Winding material-Ø (depending on the characteristics of the material)	max. 30 mm
Operating height	1075 mm (+/- 25 mm)
Coil weight	max. 70 kg
Rotation speed	0 - 250 min ⁻¹ (3 kW) continuously adjustable
Line speed	max. 250 m / min
Electrical connection (CEE-connector plug)	230 / 400 V - 50 Hz
L x W x H	2700 x 1700 x 2100 mm
Weight (without accessories)	approx. 800 kg

RINGROL 800

Semi-automatic coil winder

Basic equipment:

- Painted, solid steel profile frame to be screwed on the ground
- Protective hood is pneumatically opened and closed at a push of a button
- Protective hood with safety switch integrated in the machine
- Horizontal winding desk with built-in winding plate
- Winding core pneumatically adjustable
- Infinitely variable core diameter
- Counter plate adjustable to coil width by push of a button
- Pneumatically liftable counter plate
- Traversing slide provided for additional units such as length measuring devices, material cutter, feeders and guidances
- Automatic servo drive for traversing slides
- Traversing speed automatically adapts to rotation speed (synchronization)
- Winding drive by AC gear motor with infinitely variable speed control as well as speed control via potentiometer adjustable in control desk
- Easy-to-handle control and operating centre in the working area with emergency-stop button, provided for the installation of a pre-selection counter
- Touch panel for the display of operating conditions and error messages as well as for the input of operating parameters
- Electrical switch cabinet installed in the machine
- Electrical connection via strip terminal in switch cabinet
- Operating side: on the left (in winding direction)

Recommended equipment:

- **Length measuring device MESSBOI 80 LC / LC-MID** with optionally selectable central adjustment of the guide rollers
 - Error limit, accuracy class III with additional inlet and outlet roller cages + / - 0,5 %
 - Conformity assessment of the length measuring device according module F is approved by German calibration authorities for a period of two years, valid in EEA
 - Pre-selection counter with disconnecting contact of the drive

Optional:

- **Automatic storage** of the cutting data
- **Pneumatically operated cutting unit** for cutting the winding material
- **Material feeder** allows to put the winding material quickly in the winding unit
- **INKJET printer** in order to print phrases or figures onto the winding material
- **Binding unit** for wound coil mountable at the machine

Further auxiliary equipment on request