

# TROMPIN 800 / 1250

## Drum and spool unwinder

### With mounted accumulator

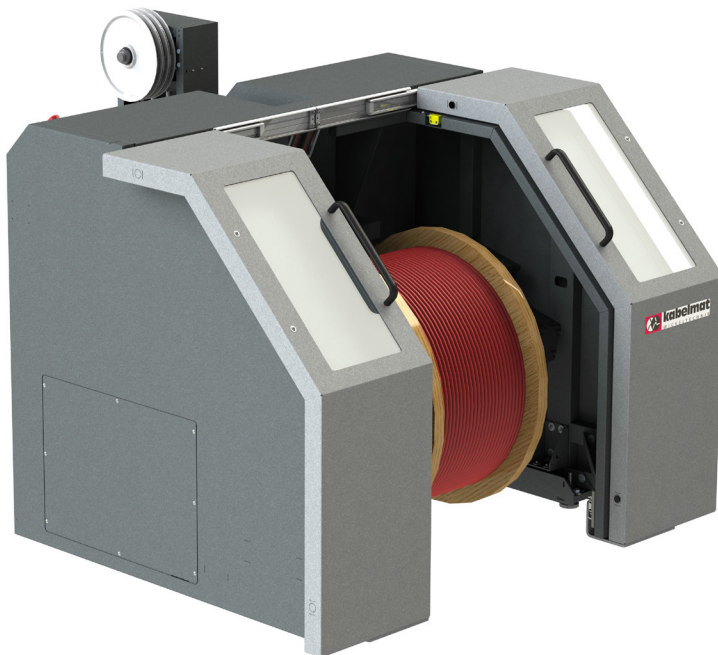


Fig. 1 TROMPIN 800 with open safety doors

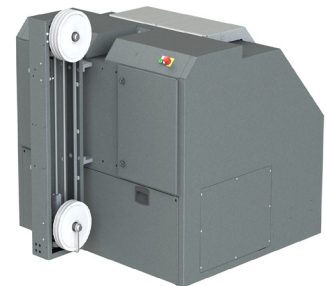


Fig. 2 TROMPIN 800 back view with mounted accumulator section



Fig. 3 TROMPIN 800 with closed safety doors

## TROMPIN 800 / 1250

- **Motorised drum and spool unwinder for cables, hoses and other materials**

This motorised drum and coil unwinder is the perfect addition to our range of stripping and winding machines. The fitted accumulator section allows you to unwind cables, hoses and much more virtually free of tension and enables synchronisation of the drive units along the line of machines (consisting of stripping, winding and pay-off devices).

### Functionality:

The drum that is to be unwound is rolled to the mounting location by hand. The drum is mounted securely and expeditiously using barrel arms. The operator presses a button to move the open barrel arms together one by one and to the correct transfer height. Once the barrel arms have clamped the drums in place, they are moved up to the unwinding position. The unwinder is controlled automatically in a line operation. This can only take place if the safety doors are closed.

Technical data	TROMPIN 800	TROMPIN 1250
<b>Part No.</b>	<b>2035.000</b>	<b>2037.000</b>
Drum-Ø	400 - 800 mm	400 -1250 mm
Drum weight	max. 400 kg	max. 600 kg
Material-Ø	approx. 1 - 16 mm	approx. 1 - 16 mm
Distance between centre of cones	max. 660 mm	max. 1050 mm
Speed for core-Ø > 200 mm*	180 m / min	180 m / min
Accumulator section wheel-Ø	240 mm	240 mm
L x W x H	approx. 1750 x 1500 x 1500 mm	approx. 2200 x 2200 x 1700 mm
Weight	approx. 750 kg	approx. 1250 kg
Storage section wheel assembly and tensile force subject to customer specification.		
* For a core-Ø < 200 mm, the max. speed will decrease		